



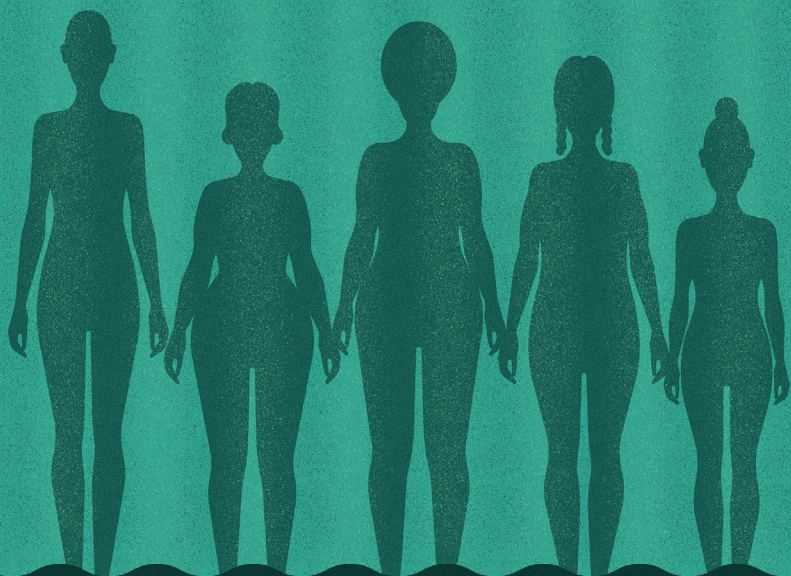
THE BLACK REP

THEATRE OF THE SOUL SINCE 1976

# BEHIND THE SHEET

BY CHARLY EVON SIMPSON DIRECTED BY RON HIMES

FRIENDSHIP GROWS IN EVEN THE HARSHTEST CONDITIONS.



MARCH 16 - APRIL 03, 2022 • BERGES THEATRE AT COCA

# BEHIND THE SHEET

By Charly Evon Simpson  
Directed by Ron Himes\*\*

*Scenic and Video Design*  
Margery and Peter Spack

*Lighting Design*  
Joe Clapper

*Sound Design*  
Lamar Harris

*Costume Design*  
Andre Harrington

*Stage Manager*  
Jim Anthony\*

*Assistant Stage Manager*  
Zarhia Moore

**MARCH 16 - APRIL 3, 2022**  
**BERGES THEATRE**  
**COCA**

\*\* SDC, The Director is a member of the Society of Stage Directors and Choreographers, Inc. an independent national labor union \*Members of Actor's Equity Association, the Union of Professional Actors and Stage Hands of the United States.

BEHIND THE SHEET is presented by special arrangements with Dramatists Play Service, Inc., New York

BEHIND THE SHEET  
received its world premiere in January 2019 at the Ensemble Studio Theatre  
(William Carden, Artistic Director; Sarah A. McLellan, Executive Director)

BEHIND THE SHEET was originally commissioned and developed by the the Ensemble Studio Theatre/Alfred P. Sloan Foundation Science & Technology Project

This production was made possible in part by the Ensemble Studio Theatre/Alfred P. Sloan Foundation Science & Technology Project with additional support from The Black Rep's Sophisticated Ladies, the Berges Family Foundation and Caleres.



The Black Rep graciously acknowledges annual operating support for its mainstage and educational programs from:

# SEASON 45 PARTNERS



KeepArtHappening.org



THE BLACK SEED

CALERES  
★ 5 ★

- Ensemble
- Studio
- Theatre



# ABOUT THE PLAYWRIGHT



Charly Evon Simpson's plays include *Jump*,\* *Behind the Sheet*\*, *form of a girl unknown*, *it's not a trip it's a journey*, and more. Her work has been seen and/or developed with The Eugene O'Neill Theater Center, Vineyard Theatre, WP Theater, Ensemble Studio Theatre, The Lark, Page 73, Ars Nova, Chautauqua Theater Company, PlayMakers Repertory Company, Salt Lake Acting Company, The Fire This Time Festival, National New Play Network through its NNPN/Kennedy Center MFA Playwrights Workshop and National Showcase of New Plays, and others. Charly was named the 2019-20 recipient of the Paula Vogel Playwriting Award from the Vineyard Theatre, co-recipient of the Dramatists

Guild's Lanford Wilson Award, was nominated for the Outer Critics Circle's John Gassner Award, and had two of her plays on the 2019 Kilroys List. Her play *Jump* is the first recipient of the David Goldman Fund for New Plays. She has received commissions from Manhattan Theatre Club/Sloan, EST/Sloan, Cleveland Play House, South Coast Repertory, Barnard College, and more. She's currently a core writer at The Playwrights' Center and a resident of New Dramatists. Charly is a former member of WP Theater's 2018-2020 Theater Lab, SPACE on Ryder Farm's The Working Farm, Clubbed Thumb's 17/18 Early Career Writers' Group, Ensemble Studio Theatre's Youngblood, The Amoralists' Wright Club, and Pipeline Theatre Company's PlayLab.

Charly is also writes for TV and film. She currently has an overall deal with HBO. Previously, she worked on Showtime's *American Rust*.

Charly loves to teach playwriting and storytelling to people of all ages. She has been an adjunct lecturer at SUNY Purchase and Hunter College and has taught with the 92Y, Engaging Educator, and National Theater Institute. In addition, she has worked in middle schools as a full-time tutor, a social worker, and playwriting teacher.

She received her BA from Brown University, a master's in Women's Studies from University of Oxford, New College, and her MFA in Playwriting from Hunter College, where she studied with Annie Baker, Brighde Mullins, and Branden Jacobs-Jenkins.

\**Jump* and *Behind the Sheet* are available for purchase and licensing through Dramatists Play Service.





## Behind The Sheet epilogue of sorts

While this play is ultimately fiction, many of the details are real. J. Marion Sims was a doctor in Alabama who, in the 1840s, used enslaved black women to aid in his work to fix fistulas.

J. Marion Sims experimented on at least eleven enslaved black women in his quest. We know three of their names: Anarcha, Betsey, and Lucy.

Anarcha was operated on thirty times before a cure was found.

According to Sims' autobiography, Betsey and Lucy were cured shortly after Anarcha, but other books have put this in question.

As far as we know, he did not have a relationship with one of the women.

In the later years of his experimentation, ether anesthesia was available and used, but he did not use it on the black women he worked on. They were given opium after procedures but were not given anesthesia during.

The women aided in the surgeries by holding each other down, cleaning dressings, and more. They did this and the usual work in the house and in the fields while they ailed.

Sims went on to found the first women's hospital in the United States, in New York City, and later became the president of the American Medical Association.

Until April 2018, there was a statue of Sims located along the perimeter of Central Park. It has since been moved to Green-Wood Cemetery in Brooklyn, where he is buried.



## BOARD OF DIRECTORS

**President:** Lionel Phillips, Phillips Concrete Services  
**Vice President & Chair of Ad-Hoc Education Committee,**  
Feleccia Moore-Davis, President, St. Louis Community College-Meramec  
**Immediate Past President:** Gisele Marcus, Professor of Practice, Olin Business School,  
Washington University in St. Louis  
**President Emeritus\*:** Jonathan Smith, Ph.D., St. Louis University

### **Executive Committee**

Chair, Development Committee: Allan Gray, ZHOU Brothers LLC  
Chair, Finance Committee: Barbara Feiner, Community Volunteer  
Chair, Governance Committee: Michael Brockland, SWMW Law, LLC  
Chair Marketing Committee: Alesha Henley, COCA-Center of Creative Arts  
Chair, Nominating Committee: Andreal Hoosman, Haywood Hoosman Realty

### **Ad-Hoc Education Committee**

Ebba Segerberg, Associate Dean and Chief of Staff, School of Arts and Sciences,  
Washington University-St. Louis  
Paul Steger, Dean of the Leigh Gerding School of Fine Arts, Webster University

### **Members At Large**

Tim Bennett, Community Volunteer  
Lorenzo Boyd, Managing Director, Investment Bank, Stifel  
Michael Edwards, President Famous Footwear, Caleres  
Angela Pearson, Special Projects Manager, City of St. Louis

\* Deceased

### ARTISTIC STAFF

**Founder and Producing Director** Ron Himes  
**Musical Director Emeritus** Neal Tate  
**Musical Director Emeritus** Charles Creath  
**Fellow** Christian Kitchens  
**Fellow** Kristen Gray  
**Fellow** Crayten Clendon  
**Fellow** Nychollete Easter  
**Fellow** Tatiana Durant  
**Fellow** Taijha Silas  
**Fellow** Zahria Moore

### ADMINISTRATIVE STAFF

**Director of Advancement and Strategic Initiatives** Jennifer Stoffel  
**Comptroller** Dan Tierney  
**Executive Assistant** Brian McKinley  
**Development Associate** Christina Yancy  
**Box Office Manager** Heather Beal  
**House Manager/Volunteer Coordinator** Cheryl Beal  
**Marketing Fellow** Micaela Griffin  
**Creative Group** Rodgers Townsend



## CAST

<b>Philomenia</b>	Chinna Palmer*
<b>George</b>	Jeff Cummings*
<b>Josephine</b>	Alison Kertz
<b>Dinah</b>	Patience Davis
<b>Sally</b>	Christina Yancy
<b>Mary</b>	Taijha Silas
<b>Betty</b>	Alex Johnson
<b>Benjamin/Lewis</b>	Brian McKinney
<b>Samuel/Edward</b>	Ryan Lawson-Maeske

## THE PRODUCTION STAFF

<b>Director</b>	Ron Himes**
<b>Scenic and Video Design</b>	Marjorie and Peter Spack
<b>Lighting Design</b>	Joe Clapper
<b>Sound Designer</b>	Lamar Harris
<b>Costume Designer</b>	Andre Harrington
<b>Stage Manager</b>	Jim Anthony*
<b>Assistant Stage Manager</b>	Zarhia Moore
<b>Technical Director</b>	Laura Kroska
<b>Master Carpenter</b>	Phil Dixon
<b>Costume Shop Manager</b>	Ellen Minch
<b>Covid Safety Manager</b>	Nychollete Easter

\*\* SDC, The Director is a member of the Society of Stage Directors and Choreographers, Inc. an independent national labor union \*Members of Actor's Equity Association, the Union of Professional Actors and Stage Hands of the United States.

\*Members of Actor's Equity Association, the Union of Professional Actors and Stage Hands of the United States.



FRIENDSHIP GROWS IN EVEN THE HARSHTEST CONDITIONS.

# THE CAST



**CHINNA PALMER** (Philomena), she/her/hers. Chinna is a student of life making every step “rooted in Love; driven with Purpose; in search of Truth.” Teaching: Young Playwright’s Theatre; Howard University (Acting for TV/Film TA). Training: Howard University, BFA IN ACTING; BRITISH AMERICAN DRAMA ACADEMY MIDSUMMER IN OXFORD PROGRAM. REGIONAL: Shakespeare Theatre Company: Our Town (upcoming). Round House Theatre: Nollywood Dreams (upcoming); Woolly Mammoth Theatre Company: Fairview. FILM: Akata Boys, The Zeke Sanders Story, Train, We Find Love. WEB SERIES: Perfect; Homebound: We Wear the Mask; Washington Post: Throwback Thursday. AWARDS: American Black Film Festival: Web Series Official Selection (Perfect). PERSONAL: INSTAGRAM: @CHINNA.PALMER



**JEFF CUMMINGS** (Dr. George Barry) is excited to make his first appearance at The Black Rep to help tell this important story, BEHIND THE SHEET. St. Louis credits include Jake in JAKE’S WOMEN for Moonstone Theatre Company (STL Theater Circle Award nomination), Ghost of Hamlet’s Father in HAMLET and Thor in OSLO for The Repertory Theatre of St. Louis, Boyet in LOVE’S LABOR’S LOST for STL Shakespeare Festival, and Dr. Aster in LIFE SUCKS for New Jewish Theatre. Jeff has been fortunate to work as an actor in over seventy professional productions including roles at Chicago’s Goodman Theatre, Chicago Shakespeare Theatre, Indiana Repertory Theatre, Atlanta’s Alliance Theatre, South Jersey Regional Theatre, Seattle’s ACT Theatre, Portland Centre Stage, Sacramento Theater Company, California Shakespeare Festival, Utah Shakespeare Festival, and seven seasons with the Oregon Shakespeare Festival. Favorite roles include James Leeds in CHILDREN OF A LESSER GOD, Brutus in JULIUS CAESAR, Jim Tyrone in A MOON FOR THE MISBEGOTTEN, Claudius in HAMLET, Dr. Givings in IN THE NEXT ROOM (OR THE VIBRATOR PLAY), Septimius in ARCADIA, and Albert Einstein in Steve Martin’s PICASSO AT THE LAPIN AGILE. He is also an Audie Award-winning audiobook narrator with over 250 titles recorded including works by Mark Twain, Philip K. Dick, Gore Vidal, Nora Roberts, and Dean Koontz. Additionally, Jeff is a caretaker, a movie-lover, a Shakespeare monologue coach, and an election judge.



**ALISON KERTZ** (Josephine) is a St. Louis native. She received her BA in Theatre (Performance) from the University of Missouri in 2017. She went on to become an Actor Apprentice at the Great River Shakespeare Festival in Winona, MN. Two weeks after closing at Great River, Alison moved to Glasgow, Scotland, where she achieved her MA in Acting (Classic and Contemporary Text) at the Royal Conservatoire of Scotland, which was recently named 3rd in the world for performing arts education. While at the RCS, Alison completed an intensive month of training at Shakespeare’s Globe in London, culminating in a performance of scenes on the Globe stage. Upon returning to Glasgow, Alison played the titular role in Titus Andronicus at the Royal Conservatoire. During her time in Glasgow, Alison was also cast in Antony and Cleopatra

with Bard in the Botanicals, Scotland's premier Shakespeare Festival. Alison misses Scotland very much, but is very excited to be making more art stateside. She is incredibly excited to be joining The Black Rep for the first time. She feels blessed and humbled to be a part of this incredible story, which has been overlooked for far too long. Thank you, Mom, for always being my biggest supporter and fan. I love you!"



**PATIENCE DAVIS** (Dinah) is extremely humbled and honored to perform with The Black Rep and this amazing cast for the first time. As a longtime dream, she feels extremely blessed to finally launch her acting career, working with so many talented and passionate people in St. Louis! She recently performed as Steele in *A Piece of My Heart* (West End Players), Assistant Directed *The Agitators* (Upstream Theater), performed as five characters in the one woman show *Random* (Independent Theater Company), was a mogwai, jazzy gremlin and the scientist in the *Gremlins* parody (*Cherokee Street Theater*) and was graciously selected to perform in seven productions with St. Louis Shakespeare, who were the first to give her a chance on the stage. When not acting, Patience is developing her financial services business as an entrepreneur and volunteers at church.

She graduated from Lindenwood University with a Bachelor of Fine Arts in Acting and is ecstatic to pay homage to the courageous, in telling their stories of the forgotten, overlooked, abused, and unsung heroic ones of her ancestry. She dedicates her performances to her family, friends, and all those before her: the ones who sacrificed selflessly, giving her their shoulders to stand on and leap from, so she could have a better life, better stories, bigger dreams, and then do the same for the generations to come after her. "I am indebted to you all."



**CHRISTINA YANCY** (Sally), is a stage actress originally from Alabama. She received her B.F.A. Acting Degree from the University of Montevallo. While studying at university, Christina performed in several plays including *Much Ado About Nothing*, *The Last Days of Judas Iscariot*, and *HAIR*. During the day, Christina works at The St. Louis Black Repertory Company, serving as the company's Development Associate. Since joining The Black Rep, Christina has been featured in numerous Mainstage and Professional Touring productions including *Home*, *Spell #7*, *Freedom Songs*, *Sweet Clara and the Freedom Quilt*, *Stamping*, *Shouting*, *Singing Home*, and *Turn-Up*. Her work outside of The Black Rep includes the St. Louis Shakespeare Festival's 2021 production of *King Lear*. She has also worked as a guest artist in Washington University in St. Louis' 2019 production of *For Colored Girls ...*, and the 2021 virtual streaming

production of *Remember... That Time Before The Last Time*.



**TAIJHA NECOLE SILAS** (Mary) is a native of Alexandria, Louisiana. She has a Bachelor of Science in Theatre with a concentration in Performance and Directing and Musical Theatre from Northwestern State University. She is also a Faithful Sister and Alum of Phi Mu Fraternity Kappa Iota Chapter where she served as a committee head every year of her collegiate career as well as the Vice President of Greek Life at NSULA. Taijha has been performing for over 10 years with training in music, dance, acting, directing, and tech. Taijha has performed in shows such as *Hairspray*, *Rock of Ages*, *Sister Act*, and *Fame*. She has also directed selections from *Love/Sick*, *Sealed for Freshness*, *A Midsummer Nights Dream*, and *The Outsiders*. In her career, she has performed professionally as a Dancer and Host for the *Peanuts Block*

Party at Cedar Point in Sandusky, Ohio! She is currently an Acting Fellow with The Black Rep where she wears many hats by acting with the touring company in Stamping, Shouting, and Singing Home and Turn-Up and making graphics for the social media platform! She is grateful for the opportunities presented to her and hopes to continue her career in theatre for a long time! She gives thanks to Mr.Himes, Her co-workers & friends, her amazing partner Tanner Frith, and most of all her mother-loving mother Tiffany Silas



**ALEX JAY (Betty)** was born and raised in St. Louis, MO. She is an alumna of the University of Missouri- St. Louis. There, she received her Bachelors Degree in Theater and Communications. She has acted in a host of plays and musicals throughout the region. She is elated at any opportunity to grow in her craft.



**BRIAN MCKINLEY (Benjamin/Lewis)** is a native of Peoria, IL. Peoria's rich community theatre scene drew Brian onto the stage during his teenage years. Brian attended Western Illinois University (WIU) to earn a BFA in Musical Theatre. Credits from his time in college include The Colored Museum, The Wild Party, and Ruined. After attending WIU Brian moved to St. Louis to start work as an Acting Intern at The St. Louis Black Repertory Company. He's been with The Black Rep for four years and currently, he is an Executive Assistant with the company. Highlighted credits include: Sweat (St. Louis Black Repertory Company), The Wizard of Oz (Theatre League, Inc.), A Midsummer Night's Dream (Minot State University Summer Theatre), and The Wiz (Center of Creative Arts). He is extremely grateful to be performing in another Black Rep production with an amazing cast. He would like to thank his family and friends

for all their love and support.



**RYAN LAWSON-MAESKE (Samuel/Edward)** is grateful to be working with The Black Rep again, after having previously appeared in their production of Dot. A Saint Louis University graduate, he has performed with Shakespeare Festival St. Louis, West End Players Guild, Bread and Roses Missouri, St. Louis Actors' Studio and Cherokee Street Theatre, amongst others. He is a two-time St. Louis Theatre Circle Award nominee for Best Supporting Actor in a Drama. Ryan would like to thank the cast and crew for their inspiring work, as well as his friends and family for their love

and support.



*Don't miss our next show!*

**MAR 24-27, MAR 31-APR 3, APR 7-10**

# {PROOF}



*by David Auburn*

**DIRECTED BY SHARON HUNTER**



**FOR TICKETS, CALL 314-412-3850 OR VISIT**

**MOONSTONE THEATRE COMPANY.COM/TICKETS**



# STAGE MANAGEMENT



**JAMES ANTHONY** (Stage Manager) is proud to be back for his 16th production *The Black Rep*. Although primarily an actor, his career as a director and stage manager has taken him from regional theatre to summer stock and dinner theatre, with such productions as; *Who's Afraid of Virginia Woolf?* by Edward Albee, Agatha Christie's *The Mousetrap*, *The Country Girl* by Clifford Odets, and *I Ought to Be in Pictures* and *The Good Doctor* by Neil Simon. Here at *The Black Rep*, he was seen as Cap'n Cotchapee in *Purlie*, and has served as stage manager for such productions as *Ruined*, *On Golden Pond*, *The Piano Lesson*, *The Whipping Man*, *Spell #7* and, most recently, this season's *Sweat*. It is indeed a thrilling opportunity to

work once again with good friend, Ron Himes and be a part of this important play.



**ZAHRIA MOORE** (Assistant Stage Manager), is an actor, playwright, and scholar from the metro Atlanta area. She received both her BA in Theatre and her BA in English from the University of Missouri in 2019. She received her MA in Theatre and Performance Studies from the University of Maryland in 2021. Her collegiate acting experiences include *Father Comes Home from the Wars*, the world-premier of *The Green Duck Lounge*, *The Every 28 Hours Plays*, and *Corduroy*. She also had the opportunity to perform virtually in the midst of the 2020 pandemic. Zahria acted in the *Klecksography Project* (Rorschach Theatre) and the *Brown Sugar Bake-Off!* (Two Strikes Theatre Collective), both associated with the Baltimore-Washington area. Her most recent credits

include *Interface: An Evening of New Virtual Plays* funded by the Fulton County Board of Commissioners in Atlanta and *Four Wives and A Will* with the SheATL Summer Theatre Festival 2021. As a first year fellow with *The Black Rep*, Zahria is quite excited to be a part of this moving production, and she is honored to be making her St. Louis debut with *The Black Rep*. Zahria would like to thank Ron Himes, Andrea Frye, the entire cast and crew, and her *Black Rep* family for this experience. She would also like to say thank you to her village for without their support none of this would be possible.



**ACTION OF THE PLAY**

**SETTING**  
**ALABAMA**

**TIME**  
**1846 - 1848**

**ACT I**

*Prologue*

*Scene 1* Exam Room

*Scenet 2* Exam Room

*Scene 3* Josephine's Room

*Scene 4* Exam Room

*Scene 5* Outside Near Quarters

*Scene 6* Exam Room/Women's Quarters (A Few Days Later)

*Scene 7* Exam Room (A Few Days Later)

*Scene 8* Women's Quarters

*Interlude*

**INTERMISSION**

**ACT II**

*Scene 9* Nine - Sick House Office (2 ½ Years Later)

*Scene 10* Ten - Outside Sick House

*Scene 11* Eleven - George's Study

*Scene 12* Twelve - The Sick House (A Few Days Later)

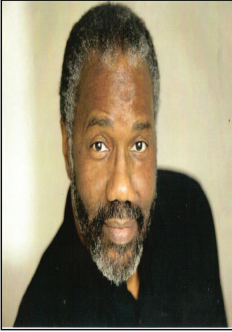
*Scene 13* Thirteen - Presentation

*Scene 14* Fourteen - The Sick House

*Epilogue*



# THE ARTISTIC TEAM

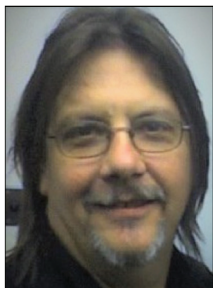


**RON HIMES** (Director), has produced and directed more than 200 plays at The Black Rep, including all ten plays written by August Wilson. His Black Rep directing credits include: Spell #7, Don't Bother Me I Can't Cope, Nina Simone; Four Women, Canfield Drive, Dot, Lines In The Dust, Twisted Melodies, Sunset Baby, Purlie, Black Nativity: A Holiday Celebration, the critically acclaimed productions of Ruined and The Montford Point Marine. Himes also created and directed the highly acclaimed, Crossin' Over and Tell Me Somethin' Good. He has directed a number of world premieres including Torn Asunder, Smash/Hit!, Insidious, Home the Musical, Servant of the People, Riffs and Urban Transitions: Loose Blossoms. Directing credits from theatres across the country include Ain't Misbehavin' and Fences (The Clarence Brown Theatre in Knoxville); The Colored Museum and Blues for an

Alabama Sky (Indiana Repertory Theatre); Flyin' West (Delaware Theatre Company); For Colored Girls..... (People's Light and Theatre Company in Philadelphia); Riffs (Seven Stages in Atlanta); Spunk, Spell #7 and Radio Golf (Studio Theatre in Washington, DC); One Flew Over the Cuckoo's Nest and I'm Not Rappaport (Old Creamery Theatre in Garrison, IA); and An Enemy of the People (Perseverance Theatre in Juneau, AK). University and College credits include: Crumbs From The Table Of Joy and Our Town, (University of Southern Indiana in Evansville); Intimate Apparel, (University of Indiana in Bloomington); You Can't Take It With You, (University of Wisconsin in Madison); The Championship Season and The Dance on Widow's Row, (Dillard University in New Orleans); Three Ways Home (University of Illinois in Champaign); The Darker Face of the Earth (University of South Carolina in Columbia); Blues for Mr. Charlie, Hairspray, Ragtime, The Lion and The Jewel and Trojan Women (Washington University in St. Louis).



**MARGERY AND PETER SPACK** (Scenic and Video Designers), recently they have designed Home, Two Trains Running, Do I Move You and Dontrell Who Kissed the Sea (presenting in StL this July!) at The Black Rep. The Last Stop on Market Street at Metro Theater Company. The Ville: Avengence!, Dress the Part, and Romeo & Juliet for St. Louis Shakespeare Festival in Forest Park. The Play that Goes Wrong at The Repertory Theatre of St. Louis. Life Sucks, New Jerusalem, Brighton Beach Memoirs (2020 Theatre Circle Award Winner) and Intimate Apparel (2018 Theatre Circle Award Winner) at The New Jewish Theatre. As Studio Spack Environment Design, Margery and Peter also design corporate theater, product reveals, broadcast news, trade show environments, and private events. They both have BFAs from Webster University and reside in their hometown of St. Louis.



**JOSEPH W CLAPPER** (Lighting Designer), feels great to once again be part of a creative team in producing live theater. What an honor to be included with this talented collection of friends. It is great to be back in the theater! I hope you will agree with me that this powerful drama, you will be living live, has been worth the wait to return your theater. Some of Joe's Black Rep credits include Home, Spell #7, Crowns, Fences, Don't Bother Me, I Can't Cope! and Dot. . Once again, it is great to be back in the Theater!



**LAMAR HARRIS** (Sound Designer/Composer), is a trombonist with a unique style and sound. His influences flow from jazz, hip-hop, world music to classical themes, are incorporated into his music. He has recorded several projects, with his latest being "The World of Man" for Alvin Ailey Dance Company's STILL choreographed by Kirven Douthit-Boyd. Lamar also plays flugelhorn, tuba, keys, deejays. He has been a featured artist at the NHL All-Star Saturday Night 2019, Taste of St. Louis, Riverfront Times Best of Awards, events for Nike, Makers Mark, Centene, the St. Louis Symphony, and the St. Louis Zoo. He has performed with artists such as Sheila E., Terence Blanchard, BeBe Winans, Fred Wesley, Sy Smith, Eric Roberson, ZO!, Marc de Clive Low, Rich Medina, and others. Lamar has been the musical director for The Repertory

Theatre of St. Louis' The Ant & The Grasshopper and Polkadots, The Cool Kids Musical 2019-2020, Shakespeare in The Street's Blow Winds, Metro Theatre Company's, Wonderland, Alice's Rock & Roll Adventure, UMSL Theater Department, The WIZ and musical consultant for New Jewish Theatre's District Merchant. In 2018, Lamar was awarded the Regional Arts Commission Artist Fellowship and was one of twenty-one award winners in Missouri of the Peabody Logos Leadership in Education Award in 2010. In 2019, he helped create FROM THE LAB, created in partnership with Opera Theatre St. Louis and nine-time Grammy Award winner trumpeter Terence Blanchard. His Sound design team for this project consisted of Jason Moore, Alphonso Harried & Antonio Foster.



**ANDRE HARRINGTON** (Costume Design), currently is a Professor of Design at California State University, San Bernardino. Mr. Harrington holds a M.F.A. from the University of Iowa, in addition to earlier costume design training from the University of Maryland at College Park. Mr. Harrington hails from the east coast, and was a freelance designer in Philadelphia, PA. He has designed costumes for many professional theatre companies, including The Alliance Theatre, TheatreWorks USA, The Court Theatre, Theatre Virginia, Freedom Theatre, St. Louis Black Repertory Theatre, Brava Theatre and Crossroads Theatre. Mr. Harrington participated in the Career Development Program for Designers sponsored by Theatre Communications Group/National Endowment for the Arts (TCG/NEA) in 1999- 2001. Mr. Harrington serves on the 2020/2022 executive board of the Black Theatre Network

as Immediate Past President. He also holds membership with United State Institute of Theatre Technology (USITT), Phi Beta Delta Honor Society and a part of CSUSB organizational membership of TCG. Mr. Harrington is a member of the United Scenic Artists Union 829.

FRIENDSHIP GROWS IN EVEN THE HARSHTEST CONDITIONS.

# MERCHANDISE



THEATRE OF THE SOUL SINCE 1976

***T-Shirts  
Sweat Shirts  
Pop Sockets***

Gold Mask Long Sleeve T-shirt (S, M, L, XL)	\$25.00
(2XL)	\$30.00
Black Mask Long Sleeve T-shirt (S, M, L, XL)	\$25.00
(2XL)	\$30.00
Playwright Sweatshirt (S, M, L, XL)	\$30.00
(2XL)	\$35.00
Playwright Long Sleeve T-shirt (S, M, L, XL)	\$25.00
(2XL)	\$30.00
Pop Socket	\$5.00
African Folding Fan	\$20.00

The Black Rep merchandise can be purchased in the lobby before the show, at intermission, after the show, at The Black Rep Administrative Office, 6662 Olive Blvd., St. Louis, MO or online at [theblackrep.org](http://theblackrep.org)





# SUPPORT

The BLack Rep wishes to acknowledge and thank our supporters. The following contributions were made in the period from September 1, 2021 through March 13, 2022. Financial gifts from companies, foundations, government entities and individuals ensure the continuance of first-rate main stage productions and education programs that touch young lives throughout Missouri and Illinois. To donate, please contact Christina Yancy, Development Associate, at 314 534-3333

## *GRANTS AND SPONSORSHIPS*

AMEREN,  
ARTS & EDUCATION COUNCIL  
BELLWETHER FOUNDATION  
BERGES FAMILY FOUNDATION  
THE BLACK COMMUNITIES INVESTMENT INITIATIVE OF  
THE ST. LOUIS COMMUNITY FOUNDATION  
THE BLACK SEED INITIATIVE  
BLACK THEATRE COMMONS  
CALERES  
CARDINALSCARE  
CENTENE CHARITABLE TRUST  
DANA BROWN CHARITABLE TRUST  
DDI  
ENSEMBLE STUDIO THEATRE  
MIDAMERICA ARTS ALLIANCE  
MISSOURI ARTS COUNCIL  
NATIONAL ENDOWMENT FOR THE ARTS  
REGIONAL ARTS COMMISSION  
RODGERS-TOWNSEND  
SAIGH FOUNDATION  
SHUBERT FOUNDATION  
ALFRED P. SLOAN FOUNDATION  
STEWART FAMILY FOUNDATION  
ST. LOUIS REGIONAL RACIAL HEALING AND JUSTICE FUND  
TRIO FOUNDATION  
WASHINGTON UNIVERSITY  
ADDITIONAL SUPPORT FROM THE BLACK COMMUNITIES  
INVESTMENT INITIATIVE OF THE ST. LOUIS COMMUNITY  
FOUNDATION, BLACK THEATRE COMMONS.

## *INDIVIDUAL GIVING*

### *DIRECTORS \$1,000 AND ABOVE*

Barry and Jackie Albrecht  
Ann Augustin  
Tim Bennett  
Michael and Anne Brockland  
Susan Buford  
Sara and Jack Burke  
Brown and Crouppen, P.C.  
Seth & Marion Eisen  
Barbara and Tom Feiner  
Maxine Clark and Robert Fox  
Christina Fischer

Alesha Henley  
Andreal Hoosman  
Pamela Blanche Jackson and John Richard  
Bush  
Gisele Marcus  
Loren Madden  
Hesse Martone, P.C.  
James E. (Clara) McLeod  
Rudy Nickens  
Lionel and Barbara Phillips  
Kathleen I. Shaw  
Paul Steger  
Natalia Tucker

And Many Generous Anonymous Donors

**STARS - \$500 TO \$999**

**Carolyn Becker  
Anne-Marie Clarke  
Richard Gaines  
Sally Johnston  
Amy Loui  
Kimberly Norwood  
Peter Wollenberg**

**And Many Generous Anonymous Donors**

**STAGE MANAGERS \$250- \$499**

Otis and Cynthia Beard  
Richard Blaha  
Michael Kunz and Deborah Bohlmann  
Starletta E DuPois  
Barbara Bushman-Goodman  
Jean and Lewis Chase  
Rosalyn E. Mason  
Jill and Daniel McGuire  
Ming-Nash Charitable Fund  
Estelle W. & Karen S. Kalish Fund of The St.  
Louis Community Foundation  
George and Amanda Murphy  
Steven Sherman  
John and Karen Sterbenz  
Elizabeth VanDyke  
Daniel and Yvette Whitehead  
And Many Generous Anonymous Donors

**ENSEMBLE \$100-\$ 249**

Brittany Renee Banks  
Eric Kendall Banks  
Angelina Bernardi  
Maxine Birdsong  
Nicole Blummer  
Odessa Chambers  
Imogene and Clyde Crumpton  
Herman and Anjanette Clarke  
Thomasina Clarke  
Kathryn Maguerite Ervin  
Sam and Marilyn Fox Foundation  
David and Agnes Garino  
Ronald Jackson  
Marla R. Jones  
Lawrence and Hannah Langsam  
Denise and Bob LaRossa  
Albertean Minor  
Alcee Polk  
Stacy Saunders  
Darrell Scott  
David Queller and Joan Strassman  
Jim and Sherri Sullivan  
Denise Thurmond  
Harry K. Ratliff, TTEE

Jan Esther Walker  
Michael and Kate Walker  
Loren and Vivian Watt  
Irvetta and Chelse Williams  
Cynthia and Thomas Woolsey  
Eleanor Zimring  
And Many Generous Anonymous Donors

**STAGE HANDS \$99& UNDER**

Cheryl Beal  
George Boniface  
Michele Dvorak  
Helen Fuller  
Trish Gorman  
Gad Guterman  
Dan Haltenhof  
Will Jacobs  
Tina Johnson  
Bhairavi Kinder  
Iver Bernstein and Kay Sherman  
William Dodd and Eileen Clarke  
Wade and Rebecca Hall  
Robert and Cindy Kahn  
Hatsephi Kushma  
Sherry Nelson  
Janine R. Pearson  
Muriel Peniston  
Kelly and Doug Ritcher  
David Secord and Amy Adams  
Joyce Thomas  
M. Denise Thomas  
Rebecca Tucker  
And Many Generous Anonymous Donors

***GIVE STL DAY 2021***

Monica Allen  
Richard Kacenski and Gerry Rauch  
Cheryl Beal  
Kristian Blackmon  
Jeremy Brok  
Jane Brown  
Trish Brown  
Joseph Clapper  
Nicole Colbert  
Danita Cole-Brown  
Eric Conners  
Lori Curtis  
Joanna Das  
John DeHart  
Ronald and Vivian Himes  
Steven Hollis  
Monica Huddleston  
Melodie Husted  
Ronald Jackson  
Phyllis Jacobson  
Gerald M. Kowarsky  
Ryan Lawson-Maeske  
Adam Long  
Perbus McJoy  
Gwendolyn McNeilly  
Pamela Moses  
Joan Noelker  
Kimberly Norwood  
Jane Pryor Doss  
Linda Reed  
Marilyn L. Robinson  
Carrie Sampler  
Ellie Schwetye  
John Scott  
Dana Scott-Person  
Linda Shead  
Richard Smith  
Delores Stith-Rutlin



# The Black Rep

## Community and Education Programs

The Black Rep offers three 50-minute touring productions performed by members of the Professional Intern Program. These shows are designed to be presented in most open spaces such as multipurpose rooms, gymnasiums and theatre auditoriums. No special lighting or sound equipment is required. Touring productions are accompanied by educational study guides with pre and post-performance activities designed to enlighten educators and students.

## *Touring Productions*

### **WAITING FOR MARTIN**

by Joseph Henderson

*Grades: 6-12; Community*

Waiting for Martin follows Solomon, a hard-working young man, Rose and her brother Pete, as they wait to see if Dr. Martin Luther King Jr. will pass through their area. Come along and learn what it was like to live in that time period through the stories of people that pass by this small group of youngsters waiting to see a man that changed history.

### **STAMPING, SHOUTING, AND SINGING HOME**

by Lisa Evans

*Grades 4-12*

Stamping, Shouting and Singing Home follows the journey of Lizzie on her quest for Truth, Justice, and Freedom. Set in the Deep South during the 1950s Civil Rights Era, Lizzie is set to dig deep into herself, her family, and her family history in order to understand the injustices present in her life and lives of those she loves.

### **TURN-UP**

by Naima Carter Russell & Eugene H. Russell IV

*Grades Pre K - 4*

Coach Carver is determined to save a failing community garden but he just can't seem to keep people interested. He fears that this growing season may be the garden's last. A mail delivery mixup somehow leads to one of his turnips growing bigger than any he's ever seen! How will he even get it out of the ground? What will he do with it when he does? A lively bunch of characters "Turn Up" to help but will it be enough? Written by Atlanta husband and wife team Naima Carter Russell and Eugene H. Russell IV and set to music, Turn-Up is a fun, humorous story about perseverance and the power of community.



## *Workshops and Residences*

Members of the Professional Touring Company conduct drama workshops in residence in schools and community centers throughout the year. Classes vary in length from 90-min. workshops to masterclasses taught for several weeks. Subject matter may be customized to fit curriculum or other requirements.

\*\$225 per 90 Min.  
(Minimum 90-min. sessions)

### *Teen Tech*

The Teen Tech Program allows interested teens to gain experience understand what it takes to develop a production behind the scenes.

\*Classes are held on Sat. from 10am-12pm for 8 weeks starting January 15th 2022

Prices:  
\$10 per class  
For more information  
email: [education@theblackrep.org](mailto:education@theblackrep.org) or  
call: 314-534-3807 ext.2

### *Young Actors Ensemble*

The Young Actors Ensemble is composed of young artists (ages 8-17). Classes from professional artists are held every Saturday from 10-11:15am for 8 wks

Prices:  
\$10 per class  
Spring Semester:  
January 15 - March 12, 2022

### *Summer Performing Arts*

Each summer The Black Rep provides an 8-week arts intensive designed to provide students an exciting opportunity to artistically express themselves through Theatre, Acting, Visual Arts, Dance, Movement, Playwriting, and Music.

For more information  
Email: [education@theblackrep.org](mailto:education@theblackrep.org)  
or call: 314-534-3807 ext.2

## *MAINSTAGE INTERGENERATIONAL MATINEES*

The Black Rep is pleased to present intergenerational matinees for all mainstage productions. Intergenerational matinees were uniquely designed to allow schools and other local organizations to experience live theatre performances and participate in post-show discussions, at an affordable rate. For more information, to book a touring show or an Intergenerational Matinee contact the Education Dept. 314 -534-3807

**BEHIND TH SHEET**  
Charlyn Evon Simpson

**MARCH 23, 2022**



FRIENDSHIP GROWS IN EVEN THE HARSHTEST CONDITIONS.

# HONORS AND MEMORIALS

*In Memory of Arthur Turner*  
Artis Turner

*In Honor of Camille Sharp*  
Darlene Bell

*In Honor of Cheryl Beal*  
Rudy Nickens

*In Memory of Dr. Jonathan Smith*

Mary Abramson, Julia Alonzo, Isabel Araujo, Gretchen Arnold, Alice Aslin, Lois Bailey, Jesus Becerra, Caroline Belden, Brittany Bennett, Tim Bennett, Kathyryn Bentley, Alice Bergmann, Jacelyn Bioh, Caitlin Bitzgaio, Philip Boehm, Mary Bradley, Madeleine Brink, David Brinker, Nancy Brown, Loretta Brunious, Milo P. Bue, Andrea Burke, Flannery Burke, Meagan L. Butler, Marsha Cann, Jen Carr Lauren Lapkus and Mike Castle, J. Clay, Carrie Codell, Geri Cole, Danita Cole-Brown, John Cooper, Joshua Corey, Lacey Cormier, Taylor Costley, Monet Covington, Charles Crowley, Christopher De La Cruz, Kim Curtis, Carol Daniel, Amanda DAquila, Adrienne Davis, Sharon HarveyDavis, Jennifer Drake, Elizabeth DunLany, Michael Dwyer, Ida and Gerald Early, Terra Edwards, Seth and Marion Eisen, Lauren Wilcox and Dan Fanelli, Jim Ford, Vanessa Garcia, Bukky, Gbadegesin, Jessica Gershman, Michael Gobo, Elizabeth Goebel Parker, Brooks Goedeker, Paul Goetz, Mark Goldenberg, Shevaun Gray, Valentina Greco, Grace Hagen, Jesse Hagen, Alice Harris, Danielle Harrison, Natalie Hart, Ann Haubrich, Aajaanne Heard, Katie Heiden-Rootes, Caroline Hendry, Patricia(Harris-Hinton) Henry, Brielle Heraty, Erik Herzog, Mary Von Der Heydt, Erica Hill, Emily Hixson, Mary Holland, Margaret Holly, Denise Hooks-Anderson, Monica Huddleston, Katie Hudson, Ellie DesPrez and Seth Hurwitz, Andrea Indyke, Will Jacobs, Marita Jason, Kevin M. Jemison, Jessie Jenkins, Amber Johnson, Tim Johnson, The Greater St. Louis Association

of Black Journalists, Stephanie Kaefler, Patricia King, Layla Kousari, Evan and Stephanie Krauss, Maureen Kumke, Barbara Kunkel, Stephanie Kurtzman, Alexis Lambright, Alyssa Lanz, Paige LaRose, Nicole Laux, LaKina LeFlore, Emily Lesnick, Valerie Lewicki, Alyssa and Ian Liskay, Thomas W. Livingston, Marilyn Lorenz-Weinkauff, Sean Loup, Emily Lutenski, Samantha Madison, Holly and David Marchant, Lori Markson, Scott Marlowe, Ashley Martin, Jenna Martin, Corinne Wohlford Mason, Doris McCarter, Morgan McCourt, Melondy McIntosh, Becky McKenna, Gwendolyn McNeilly, Patricia McQueen, Megan Meadows, Rebecca Mercer, Melissa Mickens, Katherine Miller, Kate Moriarty, Wynne Moskop, Wynne Moskop, Mallory Muratore, Amy and Keith Murphy, Monica Nixon, Kimberly Norwood, Ingrid Ostby, Cynthia Ott, Antoinette Parks, Dee Parks, Janin Richet Pearson, Zara Petkovic, Randy Pierce, Alexandra Pinel, Susan Plassmeyer, Kim Quach, Amy Reily, Emma Riley, Gary Ritter, Juan Robles, Marion Rodgers, Victoria Ruggiero, John and Carol Russell, Candace Rypisi, Joshua Sandler, Gillian Sandman, Matt Russell and Theresa Schlafly, Douglas Schleicher, Logan Short, Janine Da Silva, Melissa Silvers, Deanne Sleet, Celeste Smith, Lauren Smith, Mariah Smith, Wendy Smith, Jacques C. Smith, Jerrold Smith, Kate Spencer, Leah Squires, Chrystal Starbird, Razzberry Morphoine Studios, Dede Tabak, Susan Tebb, Deana Tennill, Joyce Thomas, Kerriane Thomas, Rhonda Travis, Kristine Turschmann, Kristina Vidovic, Rebecca Vigil, Suzanne Wallace-Swint, Regina M. Walton, Andrew Ward, Kelley Weber, Margaret Whetstone, Chantel Williams, Catherine Wing, Conrad Woolfe, Corrine Yap, Michele Yu, Rafia Zafar

*In Memory of Estella Lane*

Lynne Lane

*In Honor of Alesha Henley*

Swedroe Family Charitable Foundation

*In Honor of Eric Conners*

Lori Schuster

*In Honor of Jennifer Beavers, Reggie Ray, and Linda Kennedy*  
Andrea Hayes

*In Honor of Kentrell Jamisom*  
Lasondra Chancellor

*In Honor of Olivia Chanel Martin*  
Kendra Neely-Martin

*In Honor of Ron Himes*  
Karen Coburn, Dorothy Ilgen, Phyllis Jacobson, Christopher  
Limber, Frank and Jane Ollendorff, Bill and Ellen Yeckley

*In Honor of Rudy Nickens*  
Susan Greenberg

*In Honor of the Front Porch Society Cast*  
Diane Smoot

*In Honor of Thomasina Clark*  
Cynthia Boyd  
Diane Smoot

*In Memory of Katherine Dunham*  
Sara and Jack Burke

*In Honor and Memory of Gloria Cole*  
Danita Cole-Brown

*In Memory of Barbara Bennett*  
Karl Wilson

*In Memory of David Herman*  
Laura Moore

*In Memory of Charles Creath*  
Susan Greenberg, Sparlin Mental Health, Ronald and Vivian Himes,  
Mildred and William Reichert, Nancy Spargo



*In Memory of Charles A. Shaw*

Danielle Carr, Thomas C. Clark, Sherrie Hall, April Hamel, Stephen Limbaugh, Janette Lohman, Corey Miller, Judges of The State of Missouri, James Neely, Lionel and Barbara Phillipss, Carl and Kathleen Rowley, Allison Spence, Roberta Wilhelm, Peter Wollenberg

*In Memory of Christian Ferguson*

Theda Person

*In Honor of Vivian and Ronald Himes Jr.*

Christopher and Terri Williams

*In Memory of Curt L. Young*

Elaine A. Young

*In Memory of Dr. Milan Yancy*

Dr. Brigetta Yancy

*In Memory of G. Elretta Blaine*

M. Denise Thomas

*In Memory of Our Grandma and Mother Olga Boone*

Meg McBrien

*In Memory of Janice M. Richardson*

Benjamin F. Edwards & Co., Kyles Family Foundation,  
Traci Johnson, Christine Nevills, Larry Richardson,  
Anne Sweets, Eric Anthony Tarlas

*In Memory of Jennifer Edwards*

Cheryl Beal, Hiram Gay, Emily Kerr, Jaclyn Mcguire, Beth Prewitt

*In Memory of Joseph Henry Cole Sr.*

Ella M. Conner, Marvin and Donna Pyron, Wilson-Patterson  
Family Reunion

*In Memory of La Verne M. Thomas*

M. Denise Thomas

*In Memory of George Floyd*

Jennifer Plumley

*In Memory of Linda Kennedy*

Cheryl Beal, Philip Boehm, Tim and Jan Cerny, Sidney Cole, Sally Eaton, David Hemingway, Erin Kelley, Amy Loui, Drs. John and Marilyn Robinson.

*In Memory of Linda Kennedy & Rochelle Patterson*

Hatsephi Kushma

*In Memory of Linda Skrainka*

Stephen Skrainka

*In Memory of Lisa Colbert*

Nicole Colbert-Botchway

*In Memory of Marilouise Stuart*

Mitzi Thigpen

*In Memory of Michael L. Russell*

Marsha Cann

*In Memory of Percy and Beatrice Blackshear*

Lillian Blackshear-Bryant

*In Memory of Ron Cheney- Ethnic Art, Kansas City, Missouri*

Rasool Ahmed

*In Memory of Rosalyn Madden*

Gwedolynn Bogan, Imogene Crumpton, Levance Madden,  
Loren Madden

*In Memory of Rose & Ivy Neyland*

M. Denise Thomas

*In Memory of Rosie Lee & Patricia Baucum*

Earle Baucum

*In Memory of Karen Kalish*

Helene Frankel

*In Memory of Vernon J. Gaines*

Adrienne Gaines

*In Memory of Victoria Tate*

June Tate

*In Memory of Jo Gallagher*

Susan Fadem

*In Memory and Honor of Joan Dean*

Joanna Das

*In Memory of Kimberly Strain*

Arthurine Harris

*In Honor of Linda Kennedy and The Education Programs*

Ellie Schwetye

*In Memory of Louis T. McKinnie*

Monica Huddleston

*In Memory of Olga and Ellen Christina Boone*

Karen Bahow

*On Behalf of David Price Jr.*

Tenneco Inc.

*On Behalf of Rudolph Nickens*

Coach Diversity Insitute, LLC, Scott and Rebecca Ragland

*In Memory of Vivian Crane*

John McNeilly, Irvetta and Chelse Williams

*In Memory of Stacy Saunders*  
Kathryn Ervin

*In Honor of Jack Burke*  
Sara Burke

*In Honor of Judge Booker Shaw's Birthday*  
Dan Haltenhof, Gary and Bhairavi Kinder, Steven Sherman,  
Jim and Sherri Sullivan

*In Honor of Keith Williamson's Gala Recognition*  
Charles A. Lowenhaupt

*In Honor of Loren Grossman*  
Helen Fuller

*In Memory of Wayne and Tuck Loui*  
Amy Loui

*In Memory of Brittany Renee Banks*  
Eric Kendall Banks

*In Memory Velma Louis Martin*  
Harry K. Ratliff, T'TEE

*In Honor of Steve and Beverly Knight*  
Nina Needleman of The Ansel Elsy Foundation

*In Memory of Alice Windom*  
Otis and Cynthia Beard

*In Honor of M. Denise Thomas's Birthday*  
Shirley Sweetenburg Sexton, Linda Oliver, Denise Hook-Anderson,  
M. Denise Thomas, Patricia Williams, Josephine Brown  
Carla Baker Moore



# Sophisticated Ladies

A women's Giving Initiative committed to underwriting a main stage production each year highlighting the talents of Black female artists.

This year's production: ***Behind The Sheet***  
by Charly Evon Simpson.

A distinguished writer best known for her plays *Jump* and *Behind the Sheet*, Simpson was named the 2019-20 recipient of the Paula Vogel Playwriting Award from the Vineyard Theatre, co-recipient of the Dramatists Guild's Lanford Wilson Award, was nominated for the Outer Critics Circle's John Gassner Award, and two of her plays were named on The 2019 Kilroys' List.

## Giving Tiers



Lorraine  
Hansberry  
**\$2500**



Ruby Dee  
**\$1000**



Nina Simone  
**\$500**



Cicely Tyson  
**\$250**



Viola Davis  
**\$100**



For more information or to donate online, visit [theblackrep.org](http://theblackrep.org)

## **SOPHISTICATED LADIES**

### ***Ruby Dee \$1,000***

Sara Burke  
Barbara Feiner  
Barbara Phillips  
Anonymous Donors

### ***Nina Simone \$500***

Realists of Metropolitan St. Louis  
Deborah Patterson  
Jane and Bruce Robert  
Marilyn Robinson  
Anonymous Donors

### ***Cicely Tyson \$250***

Denise Hooks- Anderson  
Kelly Butler, NAREB  
Andreal Hoosman  
Ericca Willis Hoosman, NAREB  
Monica Huddleston  
Lee Ola Johnson  
Rhonda V. Jones, Realtist, NAREB  
Anonymous Donors

### ***Viola Davis \$100***

Eva Frazier  
Jacquelyn Garrett  
Dorene Hossman  
Alan F. Johnson  
Pamela and Victor Kirkwood  
Anita McDonald  
Monica McFee  
Karen Morrison  
Denise M. Thimes  
Anonymous Donors

### ***Other Gracious Donors***

Gwendolyn and John McNeily



# THE 45<sup>TH</sup> ANNIVERSARY GALA

## **GALA COMMITTEE CO-CHAIRS**

HANK WEBBER  
KEITH WILLIAMSON

## **GALA COMMITTEE MEMBERS**

Carlton and Rhonda, Carter-Adams, Bob Clark, Loren & Marcia Grossman,  
Steve Knight, Ed Macias, Richard & Elizabeth Nix, Jr., Deborah Patterson,  
David & Joyce Price, Emily Pulitzer, John Russell, Denise Thimes, Kevin Short,  
Dr. Donald Suggs, Cheryl Walker, Mark Wrighton

**FRANKIE FREEMAN AWARD  
CHAMPIONS**  
\$10,000-\$14,999

GAZELLE  
ST. LOUIS AMERICAN

## **VIP RECEPTION SPONSOR**

BUTLER'S PANTRY

CENTENE CORPORATION  
TAYLOR FAMILY FOUNDATION  
WASHINGTON UNIVERSITY IN ST. LOUIS

**RED CARPET SPONSOR**  
5,000

UNION STATION ST. LOUIS

## **GALA FORMALWEAR SPONSOR**

SAVVI FORMALWEAR

## **1000 COMMUNITY PARTNER**

## **THEATRE EDUCATION LEADER**

5,000

CLAYCO

EDWARD JONES

ENTERPRISE BANK AND TRUST

ENTERPRISE HOLDINGS

DAVID AND JOYCE PRICE

CHERYL WALKER

KEITH WILLIAMSON

MARK WRIGHTON AND

RISA ZWERLING

## **FELLOWSHIP SUPPORTER**

\$1,500 - \$2,499

VINCE BENNETT

BARBARA AND TOM FEINER

LOREN AND MARCIA GROSSMAN

ALESHA HENLEYGRICE AND

GISELE MARCUS

HANK WEBBER AND CHRIS JACOBS

HAYWOOD HOOSMAN REALTY

THE MUNY

SAINT LOUIS UNIVERSITY

ST. LOUIS COMMUNITY COLLEGE

SWMW LAW

WEBSTER UNIVERSITY

## **MEDIA SPONSORS**

DDI MEDIA

ALPHA KAPPA ALPHA SORORITY, INC.

GAMMA OMEGA/ IVY ALLIANCE

CARLTON AND RHONDA CARTER

ADAMS

ALBRECHT FAMILY FUND

TIM BENNETT

SHELBE F. BULLOCK

MICHAEL AND ANNE BROCKLAND

HILLARY ANGER ELFENBEIN

GREGORY GLORE AND

THE GLORE FUND

HUDSON AND ASSOCIATES LLC

DR. SHIRLEY KNIGHT AND DR. AN-

THONY NEWELL

STEVE AND BEVERLY KNIGHT

MONT AND KAREN LEVY

AMY LOUI

ED AND TEDI MACIAS

MCCORMACK BARON SALAZAR

DEBORAH PATTERSON

BARBARA AND LIONEL PHILLIPS

EMILY RAUH PULITZER

JOHN RUSSELL

BRUCE AND JANE ROBERT

KEVIN SHORT (CLAYTON CAPITAL

PARTNERS)

JENNIFER STOFFEL AND STEPHEN

PHILLIPS

DONALD M. SUGGS

DENISE THIMES

MILTON AND NINA WILKINS

**PUT A CHILD IN A SEAT SPONSOR**

SETH AND MARION EISEN  
KAREN JORDAN  
ASHLEY AND JOHN KEMPER  
KEN AND NANCY KRANZBERG  
NINA NEEDLEMAN OF THE ANSEL  
AND ELSYE FOUNDATION  
EBBA SEGERBERG  
KENNETH STONE  
LARRY RICHARDSON

**OTHER GENEROUS DONORS**

GAIL AND WENDELL ALLMON  
CANDICE CARTER OLIVER  
(CONFLUENCE ACADEMY)  
OTIS AND CYNTHIA BEARD  
DONNA ROGERS-BEARD  
VIOLA BIGGERS  
GWEN BOGAN  
STEPHANIE BROWN  
PANNILL CAMP  
MONICA CAMPBELL  
JENN AND MARTY CLAY  
JOANNA DAS  
ADRIENNE DAVIS  
TEPHANIE DELANEY  
DAVID AND VENITA DIXON  
LORI DOWD  
ELINOR EVANS  
HARVEY FIELDS  
PERRI GAFFNEY  
BOB AND NANCY GELLMAN  
GREGORY GREEN  
SUSAN GREENBERG  
KARL AND ANNE GRICE  
DEANNA M. GRIFFIN  
TERESA HARRIS  
WAYNE AND THERESA HARVEY  
WILLIAM WALTER HENTCHEL  
JAN AND GABRIEL HESS  
ANNE W. HETLAGE  
CLAIRE HUNDELT  
CAROLYN JACKSON  
ALISHEA JOHNSON

ROSALIND P. JOHNSON  
APRIL MICKENS JOLLY  
WOODIE KING  
SHIRLEY KAYIRA  
EUGENE KORNBLUM  
DENNIS LANE  
HERMAN LEE  
DAN AND BURNEA LESTER  
CHARLES A. LOWENHAUPT  
MARGARET MCCLELLAN  
SANDRA MOORE  
LESLIE PARKER-WALLACE  
SUZETTA PARKS-PENNINGTON  
LEO AND LINDA PEOPLES  
ALCEE POLK  
DIANNE POWELL  
CHAUN ROBINSON  
JOHN AND MARILYN ROBINSON  
SUSAN ROGERS  
RONALD BROWNING-SMITH AND  
DENISE ROEPEL  
JOHN AND CAROL RUSSELL  
STEVEN SCOTT  
HANA SHARIF  
PHAFEDRA KEYS-SHOWERS  
BWYANE AND ROSE SMOTHERSON  
YVONNE SPARKS  
JENNIFER STRAYHORN  
DERRICK TATUM  
TONI TOWNS  
WALTER DAWIT WASHINGTON  
ELAINE A. YOUNG  
AND MANY GENEROUS ANONYMOUS  
DONORS





# FOR YOUR INFORMATION

## **IN THE THEATRE**

In order to assure the enjoyment of the theatre experience for all patrons, we ask your cooperation with the following considerations of the theatre environment.

- Due to Covid food is not permitted .
- Smoking is not permitted in the building.
- The videotaping or making of electronic or other audio and/or visual recordings of this production or distributing recordings on any medium, including the internet, is strictly prohibited, A violation of the Author's rights and actionable under United States copyright law. For moare information, please visit: <https://shop.samuel french.com/content/files/pdf/piracy-white-paper.pdf>.
- Please silence all cell phones, beeping watches and devices upon entering the theatre and during intermission.
- Children over the age of five are welcome in the theatre, but, no babies in arms please.
- Late comers will be seated in the nearest available seats at an appropriate pause in the performance. Patrons may move to their original seats at intermission.
- In case of fire, please walk in an orderly manner to the nearest exit. Do not run.

Special Services – The theatres are fully accessible to the physically challenged and includes wheelchair seating. Please see the House Staff.

## **AUDIENCE SERVICES**

Box Office – The Box Office at the theatres opens two hours prior to each performance. Advance tickets are available by calling The Black Rep Box Office at 314.534.3810 or online at [theblackrep.org](http://theblackrep.org).

To reach us in person visit:

**The Black Rep Box Office**  
**6662 Olive Blvd.**  
**University City, MO 63130**  
**[www.theblackrep.org](http://www.theblackrep.org)**

**GROUP SALES** -Host a Night at the Theatre - Bring a group of 12-99 and receive a 10% discount, or bring a group of 100 or more and receive a 20% discount. Please call the Box Office at 314.534.3810 to make your reservations.

**SUBSCRIPTIONS** – Season subscriptions offer the benefits of seat selection, ticket exchange, lost ticket replacement, and discounts to The Black Rep supporters. To subscribe, call 314.534.3810.

## **QUESTIONS ABOUT THE BLACK REP?**

Call us.....314-534-3807

Group Sales /Tickets - Heather Beal, Box Office Manager  
Volunteers - Cheryl Beal, Volunteer Coordinator

Donations - Jennifer Stoffel, Director of Advancement and Strategic Initiatives



THE BLACK REP

THEATRE OF THE SOUL SINCE 1976

# JITNEY

BY AUGUST WILSON


DIRECTED BY RON HIMES

WE'RE ALL JUST ALONG FOR THE RIDE.



MAY 11 - 29, 2022 • EDISON THEATRE AT WASHINGTON UNIVERSITY





**THE BLACK REP**  
THEATRE OF THE BLACK REPUBLIC

# BEHIND THE SHEET

BY CHARLY EVON SIMPSON DIRECTED BY BOB HIMES

FRIENDSHIP GROWS IN EVEN THE HARSHTEST CONDITIONS.



MARCH 16 - APRIL 03, 2022 • HERGES THEATRE AT COCA




SEASON 45  
BEHIND THE SHEET

MARCH 16 -  
APRIL 03




PURCHASE TICKETS AT  
[THEBLACKREP.ORG](http://THEBLACKREP.ORG)


**THE BLACK REP**  
THEATRE OF THE BLACK REPUBLIC

# JITNEY

BY AUGUST WILSON DIRECTED BY BOB HIMES

WE'RE ALL JUST ALONG FOR THE RIDE.



MAY 11 - 29, 2022 • EDISON THEATRE AT WASHINGTON UNIVERSITY




SEASON 45  
JITNEY

MAY  
11 - 29




PURCHASE TICKETS AT  
[THEBLACKREP.ORG](http://THEBLACKREP.ORG)


**THE BLACK REP**  
THEATRE OF THE BLACK REPUBLIC

# DONTRELL, WHO KISSED THE SEA

BY NATHAN ALAN DAVIS DIRECTED BY BOB HIMES

WITH EACH WAVE, THE CALL GROWS STRONGER.



JULY 06 - 23, 2022 • EDISON THEATRE AT WASHINGTON UNIVERSITY



SEASON 45  
DONTRELL, WHO KISSED THE SEA

JULY  
06 - 23



SPONSORS



NATIONAL  
ENDOWMENT  
for the ARTS  
[arts.gov](http://arts.gov)